

COMPARABLE ANALYSIS OF COLOURS OF LITHUANIAN FOLK BEDSPREADS AND TOWELS

ensait



ASSELOS-BEBIN* Kalyanne, KUNTZ* Pauline, KUMPIKAITĖ** Eglė

* University of Lille, National School of Textile Arts and Industries, 2 All. Louise et Victor Champier, 59100 Roubaix, France

** Kaunas University of Technology, Faculty of Mechanical Engineering and Design, Studentu str. 56, LT-51424 Kaunas, Lithuania

Introduction

The folk bedspreads and towels are very important part of Lithuanian tangible cultural heritage. They are distinguished by their variety of colors, patterns, ornamental motives and weaving techniques.

The aim of the investigation is to analyse and compare colours and their number in one item of Lithuanian folk bedspreads and towels preparing the recommendations for folk textile reconstructors.

Materials

The Lithuanian folk bedspreads (165 units) and towels (132 units) from Southern Lithuanian region Dzūkija were investigated. All the garments were woven in the period of the 19th century – the 20th century. The researched items are exhibits of Alytus Local Museum.

Colours of the bedspreads and towels were established during visual inspection of photos and were established only approximately, because to estimate the exact colour code with Pantone colour palette is not possible due to fabrics' discolouration.

The diagrams of colours and number of colours are performed using the MS Excel software.

Results and Discussion

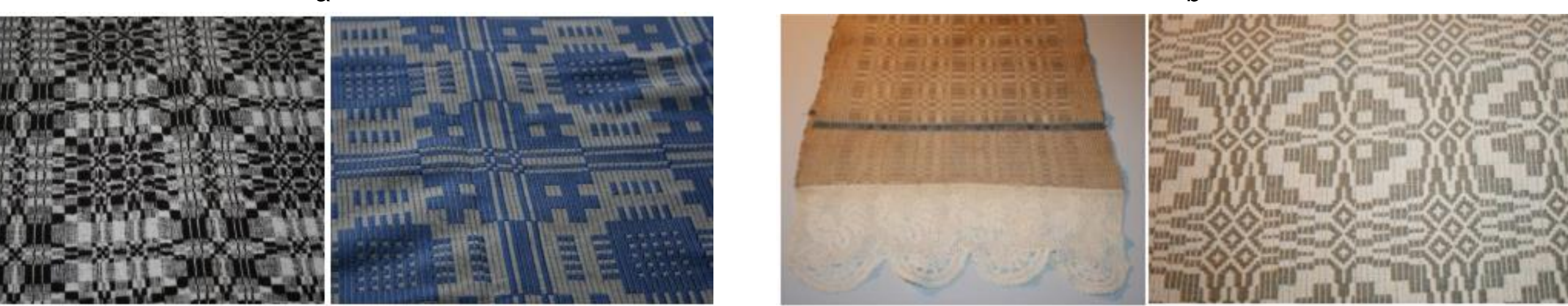
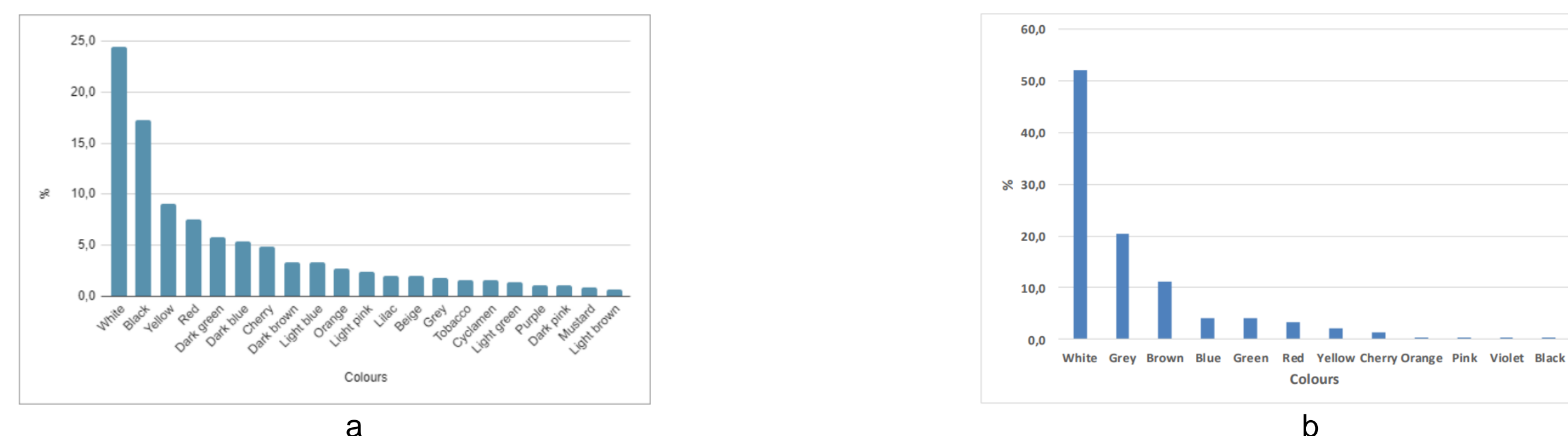


Fig. 1. Distributions of colours of: a – folk bedspreads; b – folk towels; c – bedspread AKM GEK 1543, E 827; d – bedspread AKM GEK 25949, E 1679; e – towel AKM GEK 452, E 331; f – towel AKM GEK 26899, E 1894

It can be seen that 21 colours were found in the bedspreads and only 12 colours were obtained in the towels. White colour was the most popular for both. However, black colour was the second popular colour in bedspreads, while it was the last one in the towels. It is seen that colours of natural linen (grey, brown) were popular in Lithuanian folk towels. Other colours were used rarely in these fabrics. While distribution of colours of Lithuanian folk bedspreads were totally different. Yellow, red, dark green, dark blue and cherry colours were found quite often in bedspreads.

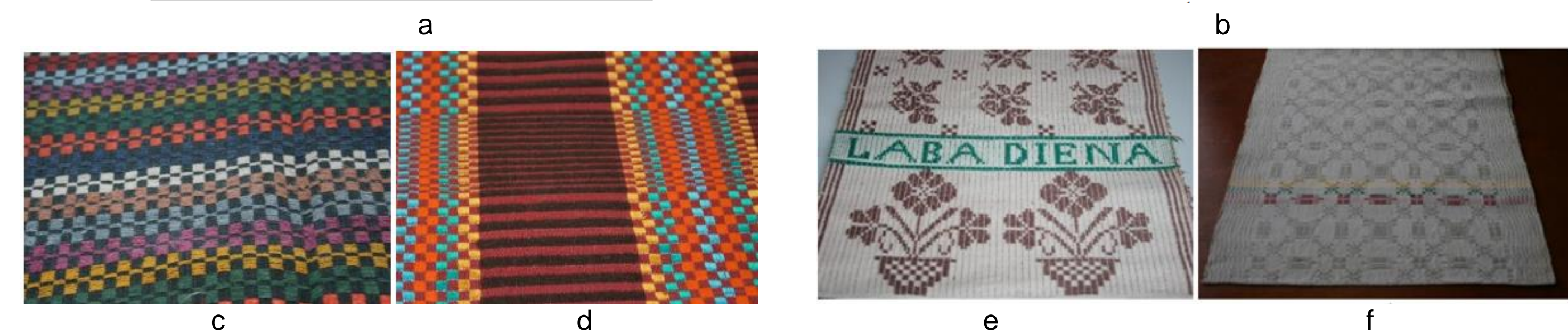


Fig. 2 Distributions of number of colours of: a – folk bedspreads; b – folk towels; a – bedspread AKM GEK 1491, E 774; b – bedspread AKM GEK 25947, E 1676; c – towel AKM GEK 811, E 620; d – towel AKM GEK 814, E 623

The distributions of number of colours in Lithuanian folk bedspreads and towels are mostly the combinations of two colours. Combinations of 1–11 different colours in one item were found in bedspreads, while combinations of only 1–6 colours were obtained in folk towels.

Conclusions

1. Colours and number of colours of 165 Lithuanian folk bedspreads and 132 folk towels were analysed and compared during investigation.
2. It was established that 21 different colours were obtained in bedspreads and only 12 colours were found in towels.
3. The most popular colours in bedspreads were white, black, yellow, red, dark green, dark blue and cherry. White, grey and brown colours were widespread in folk towels.
4. It was estimated that combinations of 1–11 colours were found in bedspreads and 1–6 colours – in towels. Two-colours combinations were obtained in both kinds of investigated assortment. One-colour towels also were popular.